

QUINN THERM

QW-Cavity Wall PIR insulation

Quinn Therm QW-Cavity Wall board is one of the range of PIR (polyisocyanurate foam) boards we manufacture for the insulation of floors, walls and roofs.

Benefits of Quinn Therm QW-Cavity Wall boards

- QW-Cavity Wall rigid insulation is well suited to use in cavity walls on new build projects.
- The low emissivity facings improve the thermal performance of the cavity and reduce the U-value of the wall.
- QW-Cavity Wall has a low thermal conductivity, minimising the thickness required to achieve the design U-value while maintaining a clear cavity.
- QW-Cavity Wall has good dimensional tolerances, enabling boards to be tightly butted to form a continuous layer of insulation.
- QW-Cavity Wall board sizes are co-ordinated with standard wall tie spacings.

Composition

Quinn Therm QW-Cavity Wall consists of a core of PIR foam with bonded foil facings. The gas filled cells give QW-Cavity Wall its high thermal performance and strength while the foil facings maximises performance.

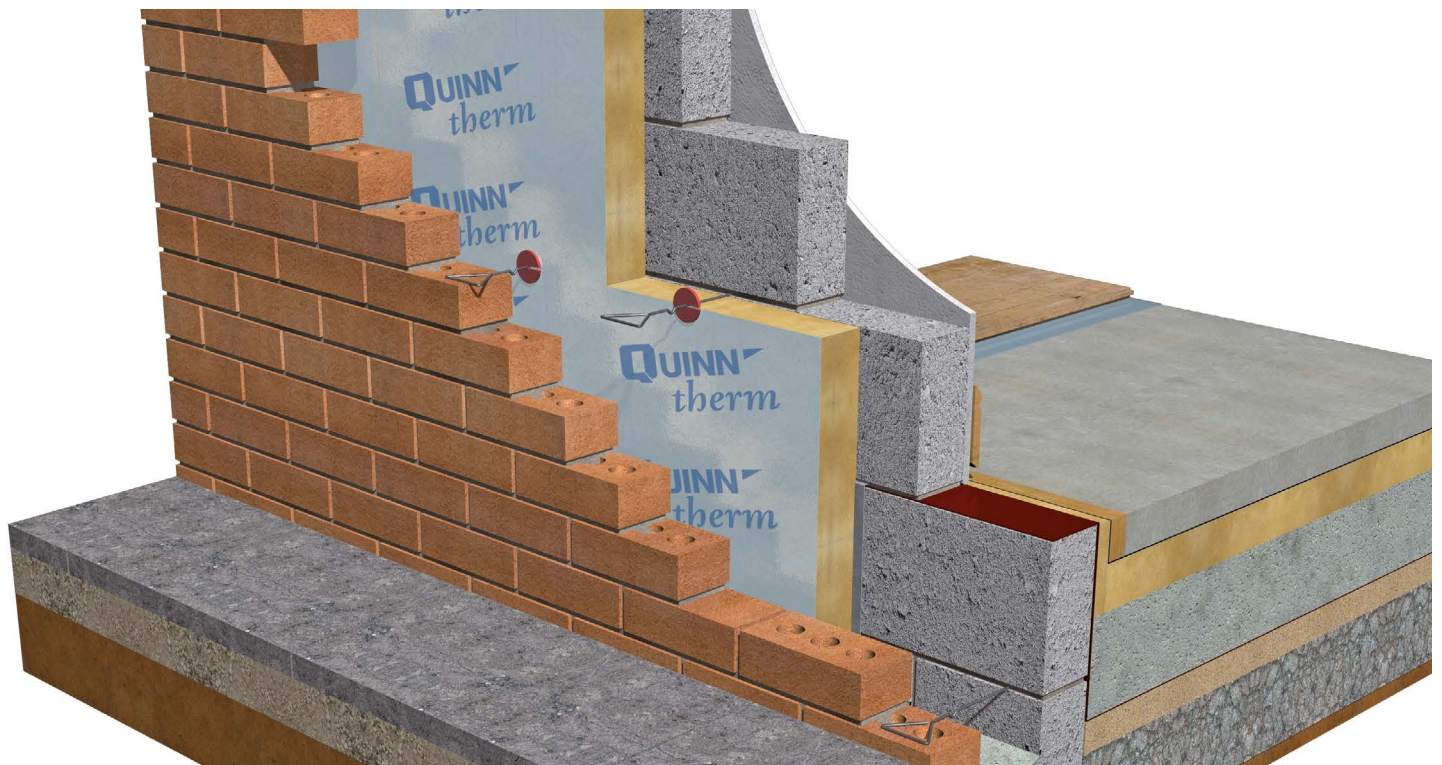
Thermal Performance

Quinn Therm QW-Cavity Wall has a thermal conductivity of 0.022W/mK, making it one of the most effective rigid board insulations available.

Environmental

Quinn Therm has an ozone depletion potential (ODP) of zero and a Global Warming Potential (GWP) of less than 5, certified to ISO 14001 - Environmental Management Systems. Quinn Therm QW-Cavity Wall achieved an A+ rating when compared to the BRE Green Guide.

Applications



Cavity walls: QW-Cavity Wall in masonry - partial fill

CE Marking



Construction Products Regulation (CPR) requires mandatory CE marking for all thermal insulation products. QW-Cavity Wall boards are CE marked to harmonised standard EN 13165. The Declaration of Performance, 01a/013 and 01b/013+, is available on our website link. (see bottom of page for link)

Delivery & Storage

Quinn Therm boards are shrinkwrapped in clear polyethylene for delivery to site. Each pack is labelled with the product description, product characteristics, manufacturer's name and brand name, quantity per pack, and any identification marks.

Biological / Chemical

Quinn Therm does not rot and does not support mould or fungus. Quinn Therm is chemically inert, and poses no threat to anyone using it.

Technical Support

Quinn Therm Ltd provides a comprehensive technical support service for designers and contractors.

Quinn Therm Ltd can provide:

- copies of Agrément and test certificates
- U-value calculations
- interstitial risk calculations
- design advice
- guidance on the most effective ways to meet current Building Regulations and Building Standards.

Contact Technical Support:

- Call: +44 (0) 28 6774 8866
- Email: technical@quinn-buildingproducts.com

Dimensional stability / Durability

When tested to EN 1604 Quinn Therm achieves level DS(TH)4 to EN 13165.

Quinn Therm will perform for the service life of the building.

Physical & Performance Characteristics

Surface	Composite foil facings
Edge:	Butt, T&G
Thicknesses:	25mm - 150mm
Length x width:	1200mm x 450mm
Thermal conductivity	0.022W/mK
Core water vapour resistivity	≈300MNs/gm
Compressive strength:	>150kPa

Fire Performance

Thickness	BS 476-7	BS EN 13501-1
20 - 55mm	Class 1	Euroclass F
60 - 150mm	Class 1	Euroclass E

Design and Installation

For design and installation information plus thicknesses of Quinn Therm QW-Cavity Wall to achieve specific U-values in all cavity wall applications, consult our Product & Installation Guide, available from Quinn Therm or via our website.

For further information:

Quinn Building Products Ltd, Derrylin, Co. Fermanagh, Northern Ireland BT92 9AU

t: +44 (0) 28 6774 8866 | www.quinn-buildingproducts.com | info@quinn-buildingproducts.com



Every effort has been taken in the preparation of this data sheet to ensure the accuracy of representations contained herein. Recommendations as to the use of materials, construction details and methods of installation are given in good faith and relate to typical situations. However, every site has different characteristics and reliance should not be placed upon the foregoing recommendations. Advice can be given as to specific applications of the products, upon request to Quinn Therm.